



## **PhD Day. Critical Legal Conference**

University of Exeter, Peter Chalk Centre, Collaborative Lecture Theatre (LT)

### **Directions to the venue**

Most maps, including Google Maps, can locate the **Peter Chalk Building**, so you can use these apps to find it easily.

- From the **train station or the city centre**: you will pass through the Forum and approach the building from the front.
- From **Holland Hall**: you will approach the building from the back.

This is the Peter Chalk building on a sunny day.



Here is a more realistic view, taken today in the gloomy weather, from the Forum — this is the way you will approach if you are coming from the train station or the city.



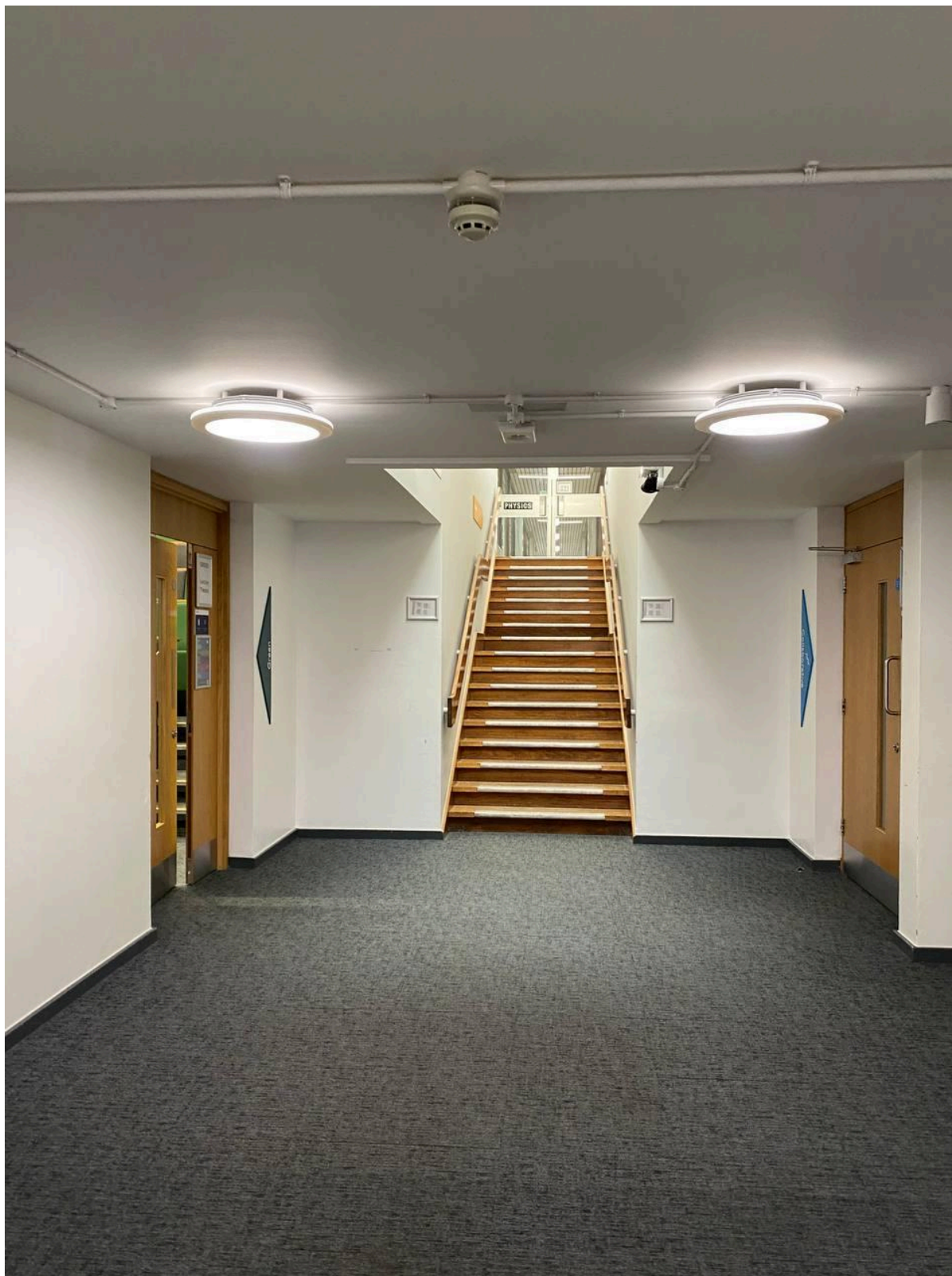
There is **only one entrance** to the Peter Chalk Building. **Once you enter through the main doors, turn right.**

Continue straight ahead until you see a corridor on your **left** with signs to different lecture theatres.





Turn into this corridor and go straight towards the stairs.



The **last lecture theatre on the right-hand side** is the **Collaborative Lecture Theatre**.



**If you get lost, please do not hesitate to email me.**